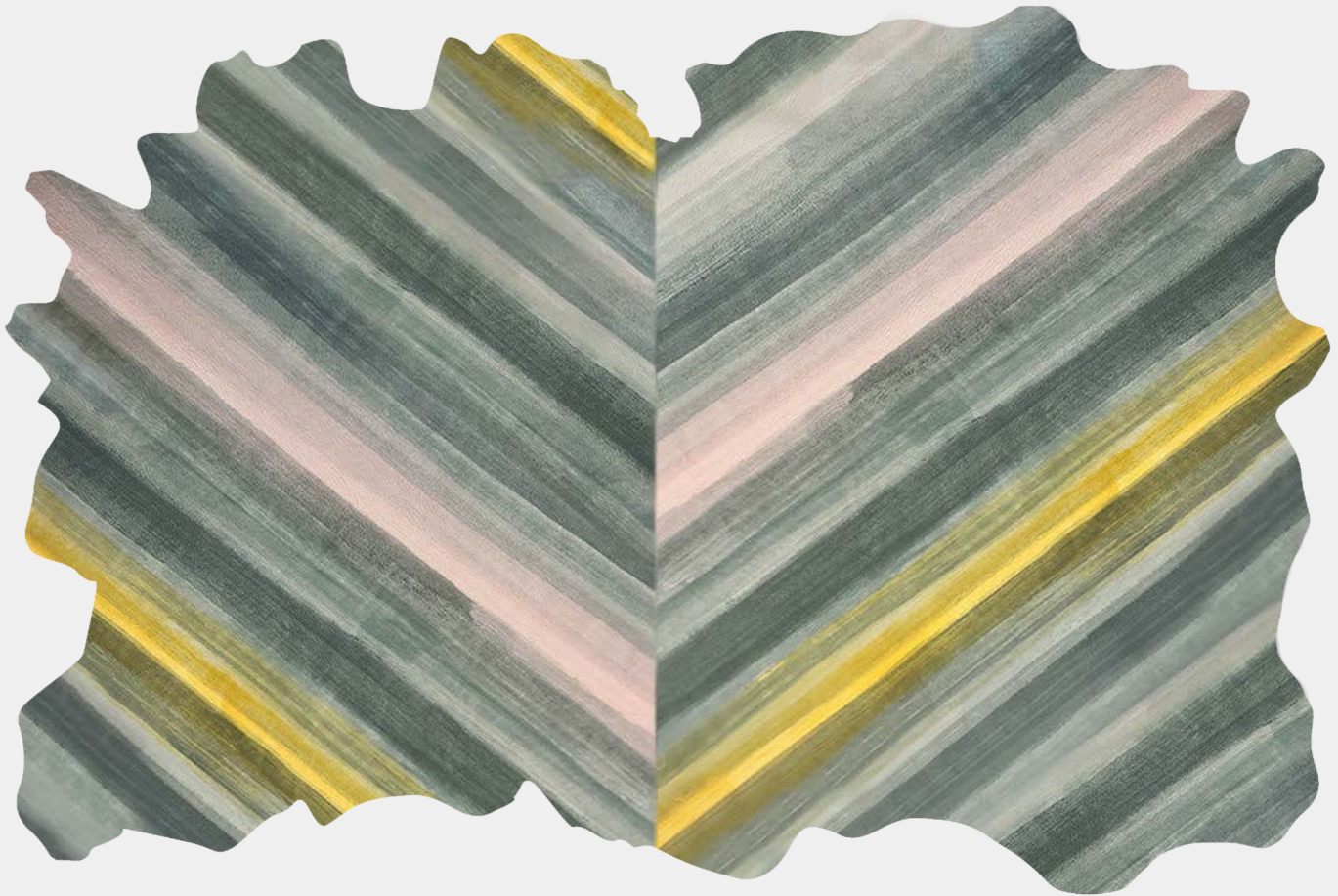


# Cowhide Rug

## Strata

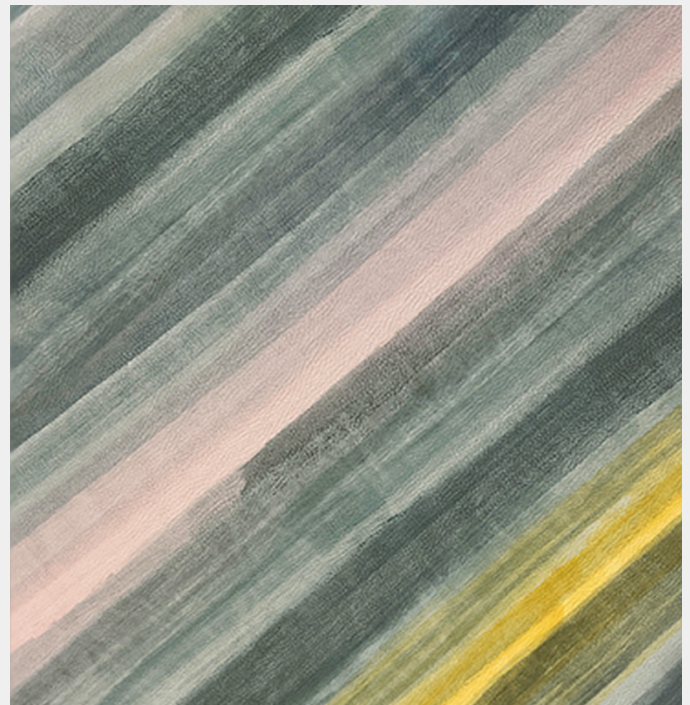
AVO



Strata | Nebula

Strata uses light washes of glaze, layered to create visual depth on a smooth surface. Colors seamlessly blend together to create an earthen landscape.

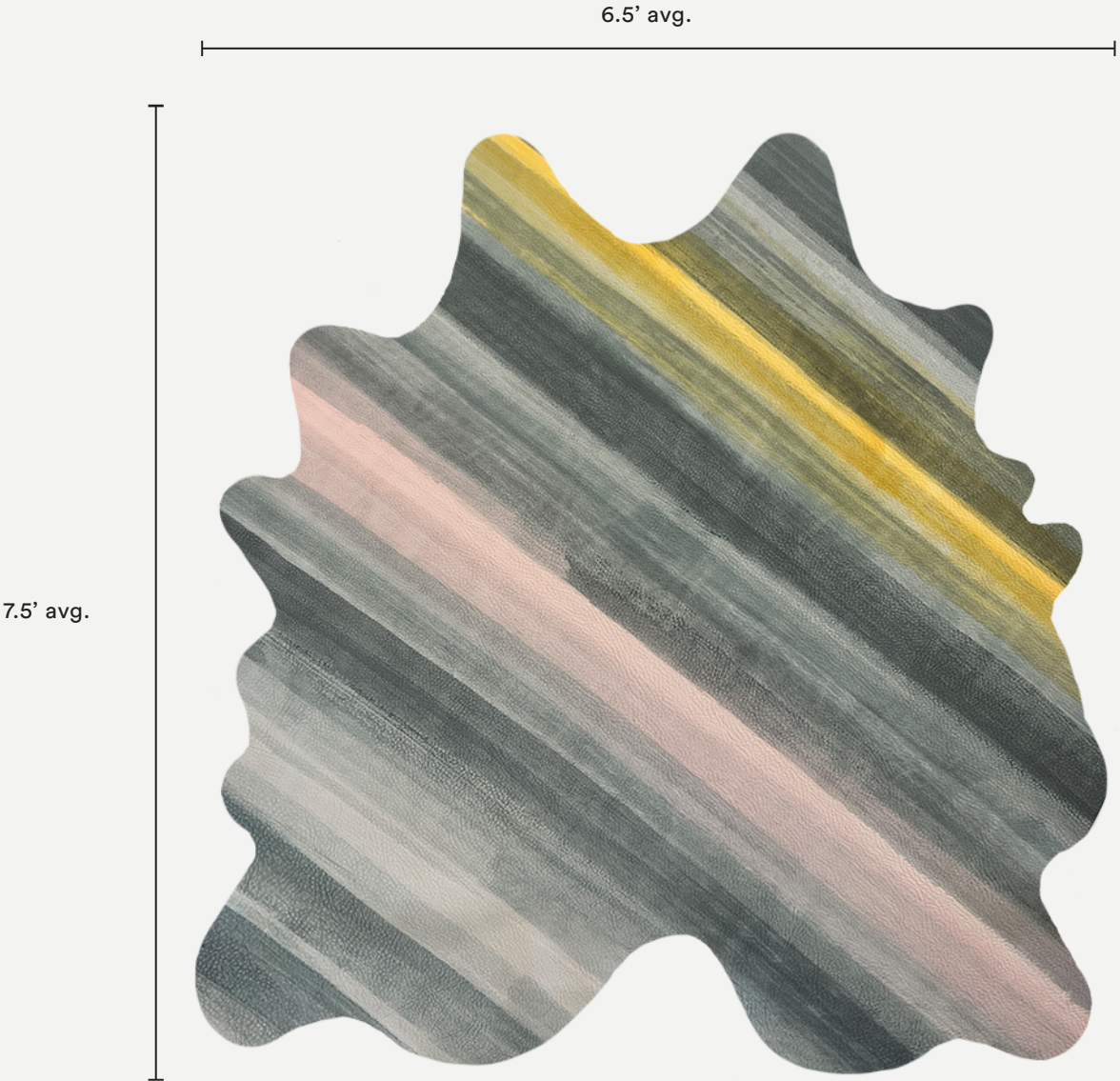
Hand dyed graphics create a modern juxtaposition between material and pattern. Our cowhide rugs enhance any space by creating a striking focal point. Each one is crafted to order in our Brooklyn studio and no two pieces are exactly alike.



Strata | Nebula

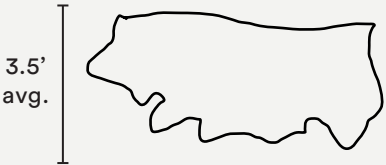
# Cowhide Rug Strata

AVO



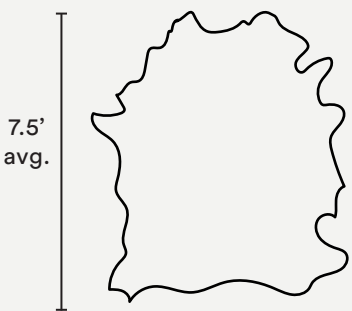
HALF COWHIDE

7.5' avg.



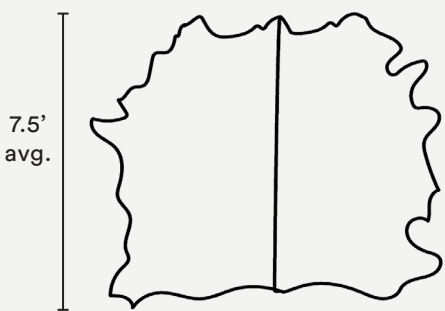
FULL COWHIDE

6.5' avg.



DOUBLE COWHIDE

11.5' avg.



# Cowhide Rug

## Strata



Pattern	Strata.
Material	Hand dyed cowhide leather.
Leather Type	Natural milled texture and full grain cowhide.
Finish	Satin-sheen, water and stain resistant protective coating.
Weight	4 - 5 oz.
Rug Pad	Separate, low profile anti-slip rug pad included. Cut to fit the unique shape of each hide. Approx. 1" clearance between rug edge and rug pad in all directions.
Primary Uses	Indoor Rugs, wall hanging.
Pricing	Sold by piece.
Available Sizes	Half Hide: ~3.5' x 7.5' (~1.06 m x 2.3 m) Full Hide: ~6.5' x 7.5' (~1.98 m x 2.3 m) Double Hide: ~11.5' x 7.5' (~3.5 m x 2.3 m)
Sample Size*	5" x 7" (12.7 cm x 17.8 cm) *Purchase on product pages: <a href="http://www.avoavo.com">www.avoavo.com</a> .
Minimum Order	1 piece.
Ordering	Contact us directly to purchase. All inquiries can be made to <a href="mailto:inquire@avoavo.com">inquire@avoavo.com</a> . Orders require a 50% deposit.
Trade Account	We offer a trade discount to interior designers and architects. Please contact us for a quote.
Lead Time	Made to order 6 - 8 weeks lead time, plus shipping.
Care	Dust with a dry cloth, sweep, or gently vacuum with a hose attachment. If a spill or spot should occur, blot immediately with a clean absorbent cloth or sponge - no wiping or scrubbing. Then let air dry completely. Do not use solvents or harsh cleaners. Recondition as needed. Always perform a test before proceeding.
Customization	Size and color can be customized. See our color library for reference: <a href="http://www.avoavo.com/color">www.avoavo.com/color</a> .
Variations	Leather is a natural product that we dye by hand. Each hide is unique and lots made at different times may vary slightly in color. Avoid exposure to direct sunlight as it might change or fade the color of your leather.
Made In	Hand dyed in Brooklyn. Made in the United States.